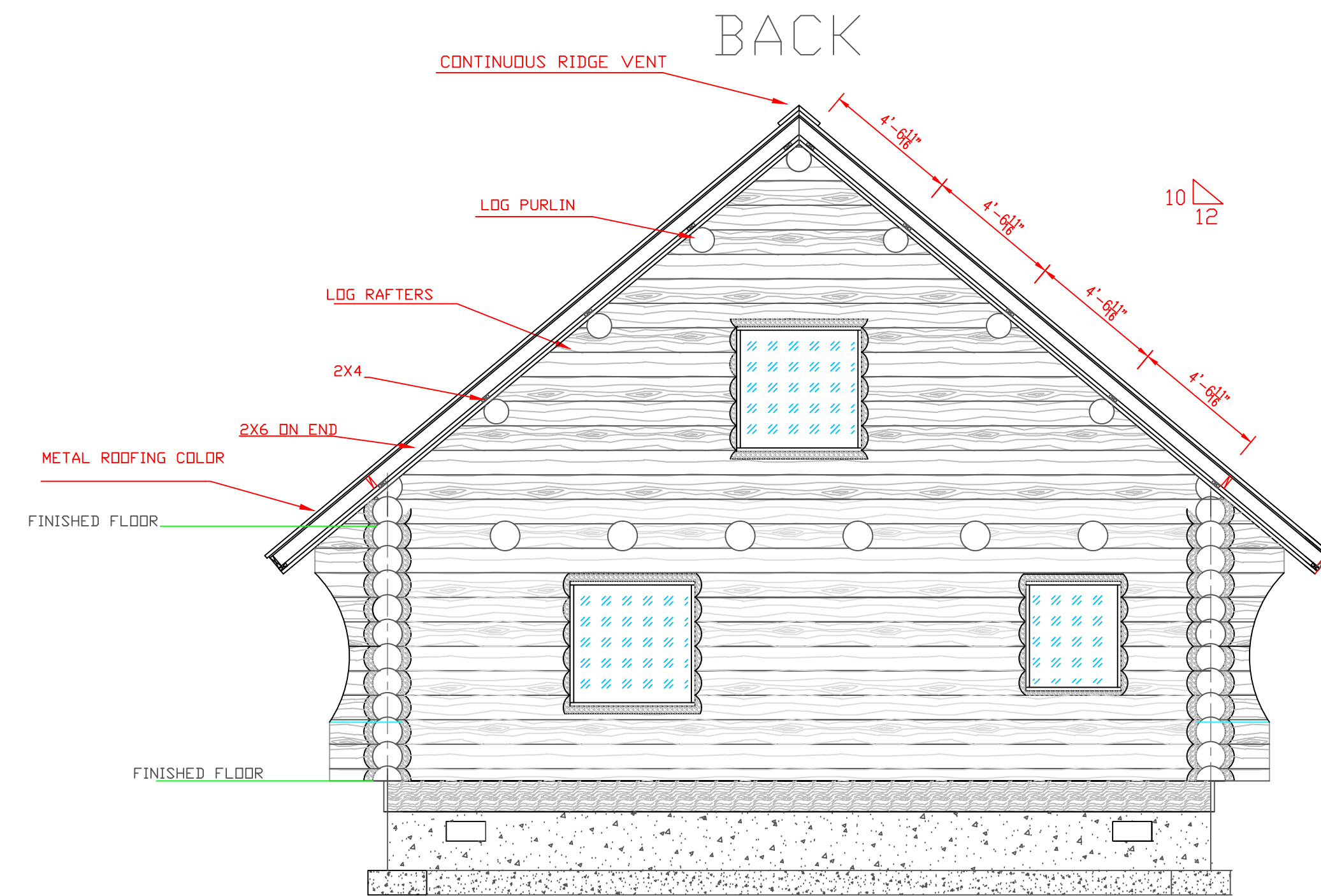
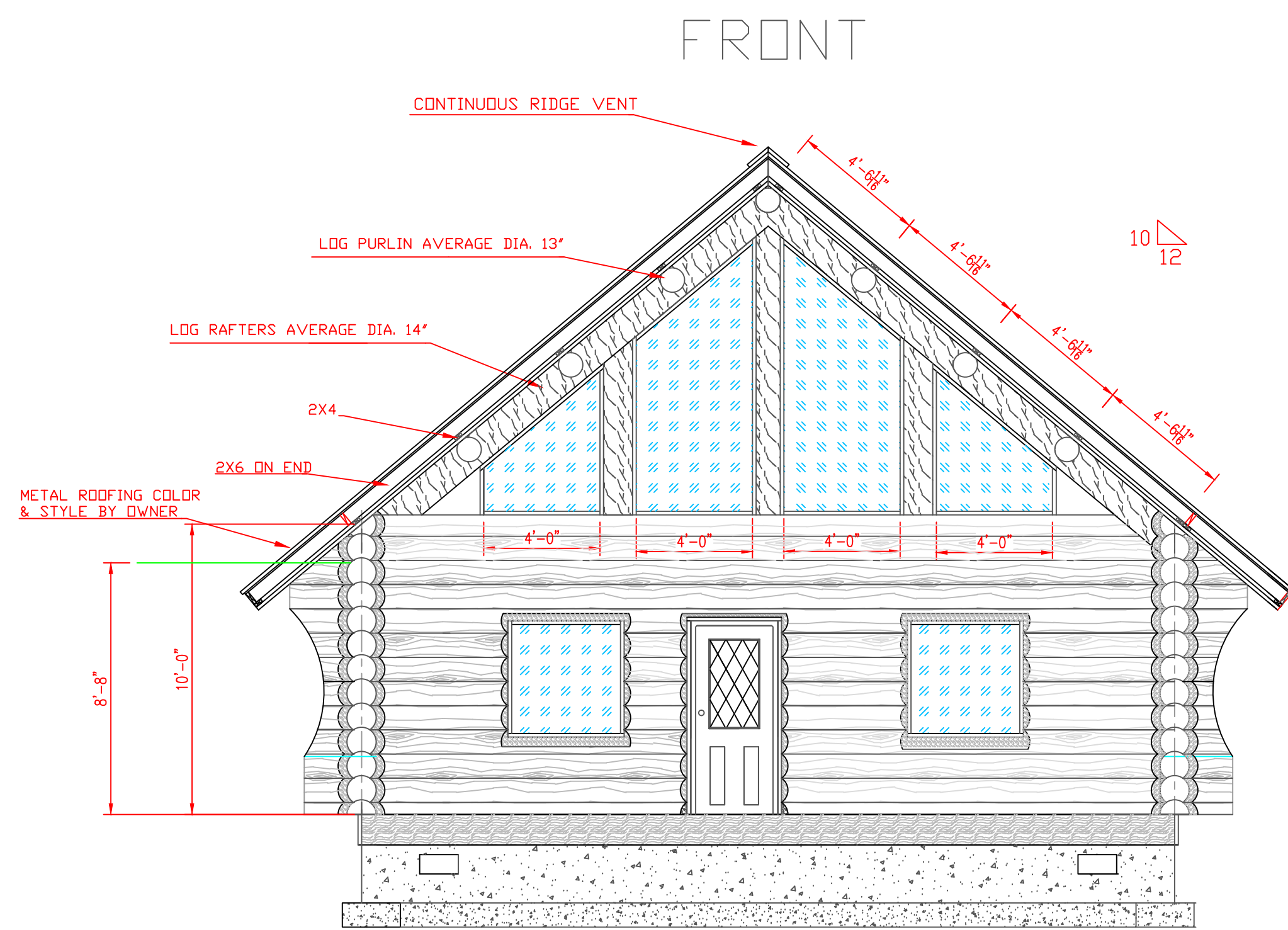
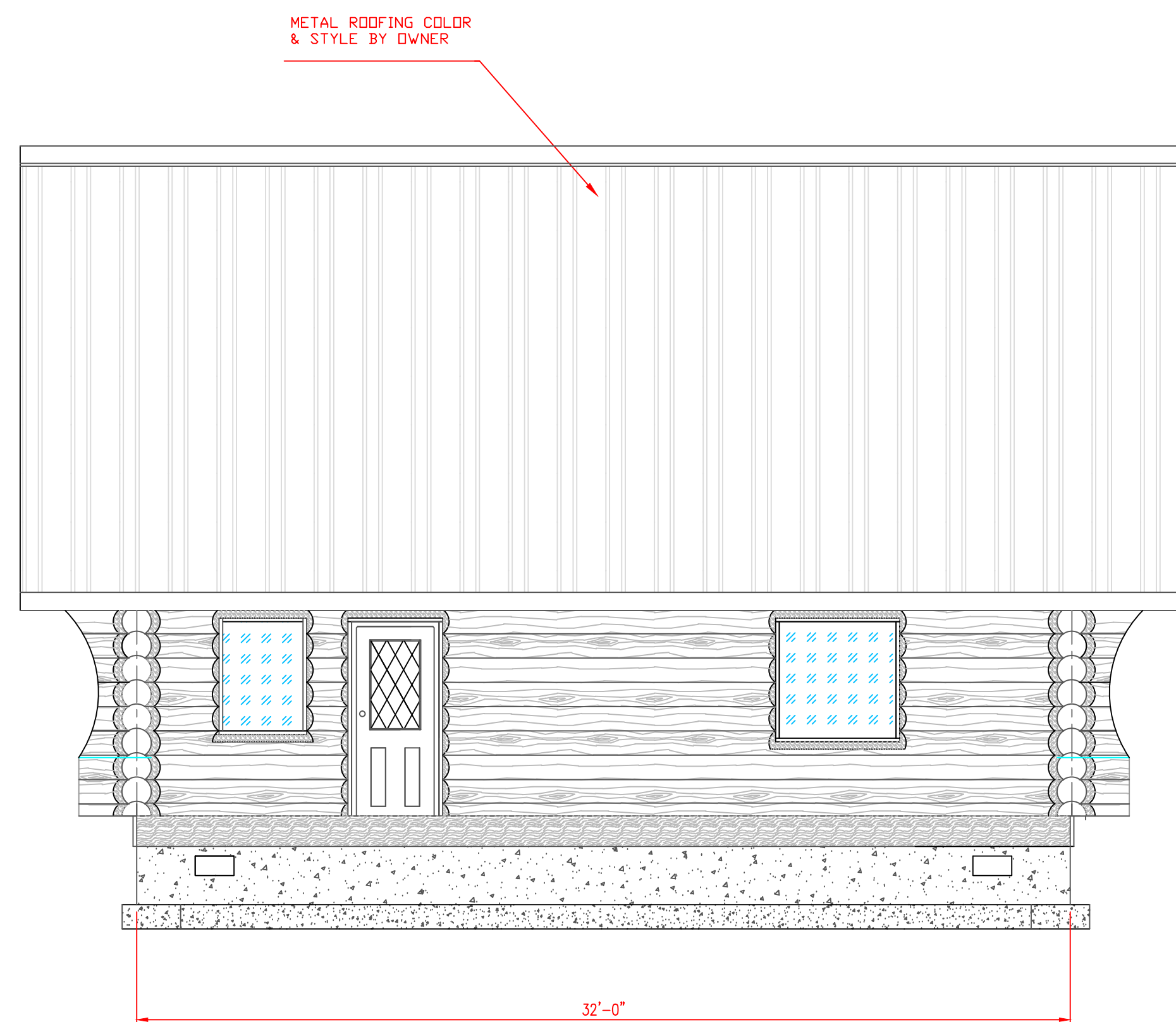


FULL SCRIBE, SWEDISH COPE LOG HOME



AREA 28'X32'
 2 BED 1-1/2 BATH
 MAIN FLOOR 958 SQ.FT.
 LOFT-----543 SQ.FT.
 TOTAL LIVING SPACE 1,501 SQ.FT.

RIGHT



LEFT



FOUNDATION BOLTS SHALL BE NOT LESS THAN 1/2" DIAMETER STEEL BOLTS AT A MAXIMUM OF 4' ON CENTER, WITH AT LEAST TWO BOLTS PER PLATE NO MORE THAN 12" FROM END OF PLATE NO CLOSER THAN 3-1/2"

CLEARWATER LOG
28'X32'
1 OF 5
SCALE 1/4"=1'
DESIGN BY MARK VESIK
E-MAIL mavesik@yahoo.com
WEB-SITE www.mvprints.net
208-451-0221

